

BENEFICE BULLETIN

Sunday 28th June Fourth Sunday after Trinity



Weekly Diary

Sunday 28

10.30am	St Peter's	Well Blessing
11.00am	St Peter's	Outdoor Service Holy Communion

Tuesday 30

10.00am	St Mary's	Little Lambs
---------	-----------	--------------

Wednesday 1 July

10.00am	St Mary's	Holy Communion
2.30pm	St Mary's	Knit and Natter

Festival of St Peter

This week our three churches are coming together to celebrate the Festival of St Peter in Lodsworth. The morning begins with the blessing of the ancient St Peter's Well at 10.30am, followed by an open-air service in the field next to St Peter's Church at 11.00am. Refreshments served after the service. Please remember to bring a chair and a picnic!



Stone Pillow

Please don't forget we're still collecting items for Stone Pillow - tinned tomatoes, beans etc, sugar, coffee, j-cloths, pan scourers and washing-up liquid. Kindly leave all donations in the trolley at St Mary's Church. Many thanks, Katharine Minchin.

Hymns in the Park!

Please note that next Sunday morning, July 5th, instead of the usual Family Service at St Mary's Church, we will be singing **Hymns in the Park!** This takes place by the roundhouse in Easebourne Park, starting at 10.30am. Don't forget to bring a chair! This event is a prelude to the ...

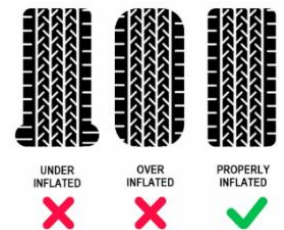
Fete in the Park

The Easebourne **Fete in the Park** begins at 11.30am on Sunday 5th July, a collaborative celebration from Easebourne Parish Council, St Mary's Church and Easebourne Primary School. Donations of bottles of any kind, not necessarily alcohol (eg fizzy drinks, ketchup, squash, shower gel etc) for the Bottle Tombola would still be very gratefully received and cakes for the Cake Stall, preferably delivered to St Mary's Church by 2.00pm on Saturday 4th July.

ECO TIPS: Under Pressure

Under-inflated tyres on your car increase your fuel consumption and can be dangerous, so check them at least once a month and before long journeys.

Over-inflated tyres are just as risky because with too much air, you're in danger of accidents, poor vehicle handling and extra costs caused by excess tyre wear.



Checking tyre pressure regularly is crucial to ensure your tyres last and that you stay safe on the road. (Source: Halfords)

'in **FAITH** we **FOLLOW** + in **HOPE** we **LIVE**
 + in **LOVE** we **SERVE**'

Visit our website: www.thepriorychurches.co.uk

Find our Facebook page: The Priory Churches

Email: bulletin@thepriorychurches.co.uk